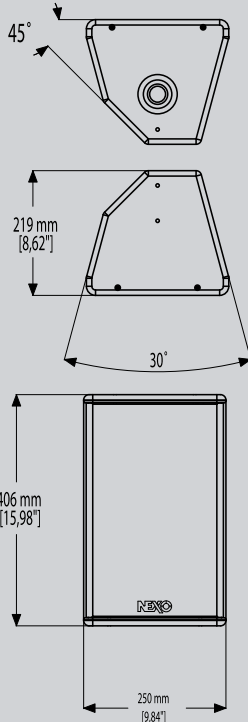


# PS8



## Key Features

- High-power system (125dB Peak SPL @ 1m) with new 8in LF and 1in HF low magnetic emission Neodymium drivers for light weight (7.5kg, 16.5lbs) and negligible magnetic leakage.
- Rotatable, asymmetrical horn and unique cabinet architecture ensure versatility; user-adaptable for both PA and stage monitoring applications.
- Two-way passive 8Ω design uses a single amplifier channel for simpler installation and lower cost.
- Sophisticated control electronics ensure reliable, linear operation. Supported with a full range of mounting and flying accessories.

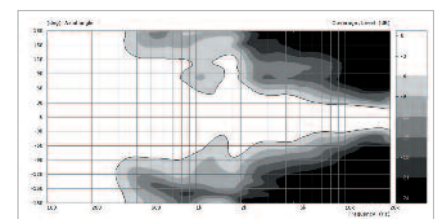
## System Applications

- Installed PA for clubs, AV, theatre, broadcast, Houses of Worship, theme parks, etc.
- High-quality, low-profile stage monitoring for clubs, AV, theatre, broadcast, etc.
- Near-field, down-fill and under-balcony systems in support of larger systems.
- Foreground and background music source for retail establishments seeking audio with impact.
- Anywhere powerful, high-quality performance is required near to magnetically-sensitive

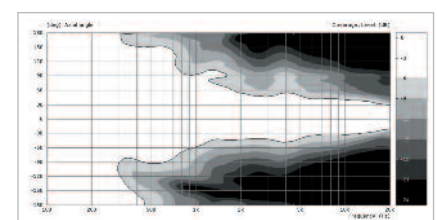


The PS8 features advanced NEXO designed low magnetic emission Neodymium drivers, making the PS8 extremely light and compact while usable next to magnetically-sensitive professional video or computer equipment. The dispersion, architecture and weight balance are designed to provide uncompromised PA and stage monitor performance from a single speaker, and background and foreground music playback applications are equally well-served.

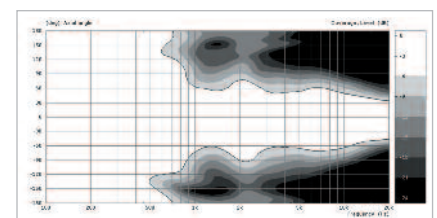
Like the new PS10-R2 and PS15-R2, this flexibility is realized by a proprietary constant directivity asymmetrical dispersion horn, easily configurable (by users) in four positions by 90° rotations. Coupled with the horn's unique progressive horizontal (50° to 100°) and vertical (55°) dispersion, the most suitable pattern can be selected for vertical or horizontal PA usage or wedge monitoring. The PS8's 2-way passive 8Ω design employs a single amplifier channel to deliver bi-amped performance, reducing system cost, size and complexity, and a new grille design increases durability while fully accommodating use as a wedge.



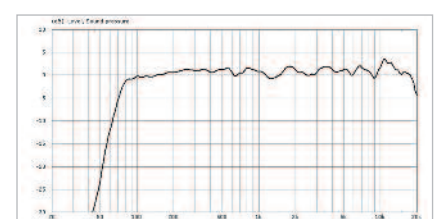
PS8 horizontal coverage, +25°



PS8 horizontal coverage, 0°

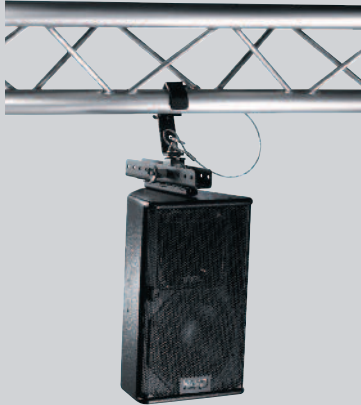


PS8 horizontal coverage, -25°



PS8 response

# PS8



NEXO is one of the world's leading sound reinforcement loudspeaker manufacturers. Founded in 1979, the company is dedicated to crafting practical solutions with solid engineering. Each new design begins with a proprietary sophisticated computer simulation process that allows every parameter to be extensively modeled and simulated, leading to breakthrough cost and performance gains. NEXO's comprehensive product line includes loudspeakers, analogue and digital control electronics and amplification; all designed to deliver consistent sound quality and long term reliability for a broad range of applications.

NEXO S.A.  
Parc d'Activité  
du Pré de la Dame Jeanne  
B.P. 5  
60128 PLAILLY  
Tel: +33 (0) 3 44 99 00 70  
Fax: +33 (0) 3 44 99 00 30  
e-mail: info@nexo.fr

NEXO LatAM  
C.C. No 33. Suc 49  
Caballito (1449)  
Buenos Aires  
Argentina  
Tel: +54 114 432 1911  
Fax: +54 114 431 1007  
e-mail: info@nexo.fr

NEXO Asia  
GPO Box 806  
Hong Kong  
SAR China  
Tel: +852 9096 3472  
Fax: +852 2104 3214  
e-mail: info@nexo.fr

**NEXO**  
www.nexo.fr

## PS8 LOUDSPEAKER PRODUCT FEATURES

Components	LF 1 x 8" (20 cm) Shielded Neodymium 8Ω driver. HF 1 x 1" Shielded Neodymium throat driver + Low Distortion, Constant Directivity Asymmetrical Dispersion Horn.
Height x Width x Depth	406mm x 250mm x 219 mm (16" x 9 7/8" x 5 5/8").
Weight	7.5 kg (16.5 lbs).
Connectors	2 x NL4MP SPEAKON 4 pole.
Construction	Baltic Birch Ply finished with textured black coating.
Fittings	Handles - Front finish: Moulded Dark Grey Metal Grill Flying Points & Fixed Installation Threaded inserts are fitted as standard to all cabinet surfaces for connection of mounting accessories.
Stand fittings	Built-in Stand Fitting, (35mm / 1 3/8").

## SYSTEM SPECIFICATIONS PS8 with PS8 TDController

Frequency Response [a]	69 Hz - 19 kHz ±3dB.
Usable Range @-6dB [a]	62 Hz - 20 kHz.
Sensitivity 1W @ 1m [b]	96 dB SPL Nominal - 94 dB SPL Wideband.
Nominal Peak SPL @ 1m [b]	122 to 125dB Peak.
HF Dispersion [c]	50° to 100° Hor. x 55° Vertical. Rotatable Horn, 4 positions.
Directivity	Q : 10 Nominal DI : 10 dB Nominal. ( f > 1.8 kHz )
Crossover Frequencies	2.5 kHz Passive.
Nominal Impedance	8Ω
Recommended Amplifiers	200 to 500 W / 8Ω.

## SYSTEM OPERATIONS

Electronic Controller	The PS8 TDController is precisely matched to the PS8 & LS400 cabinets and includes sophisticated protection systems. Using PS8 & LS400 without a properly connected PS8TD will result in poor sound quality and can damage the components. PS8 & LS400 can also be used with NXAMP4x1 and NXAMP4x4 Powered TDControllers.
Dispersion configuration	After dismounting the front grille from its fixings, the HF Horn can be rotated in 4 positions for dispersion configuration.
Sub-bass	The PS8 can be used without optional LS400 Sub-bass. Active two-way operation with the LS400 is included in the PS8TD. One LS400 matches 2 x PS8, additional LS400 may be used for enhanced LF capability.
Speaker Cables	PS8 are wired 2- & 2+ on Speakon connectors, LS400 on 1- & 1+. Loop through Speakons are present on both. Single identical cables can thus be used to loop through combinations of up to 2 x PS8 & 1 x LS400 in no particular order.

## SHIPPING & ORDERING SPECIFICATIONS

Packaging	PS8 is packaged as a single product.
Shipping Weight & Volume	8.7 kg (19.2 lbs) / 0.063 cubic metres.
Accessories	A full selection of mounting Accessories is available, please contact your Nexo Agent for details.

As part of a policy of continual improvement, NEXO reserves the right to change specifications without notice.

[a] Response curves & data : Anechoic Far Field for the PS8 + PS8TD. Half-Space Anechoic radiation for the LS400 + PS8TD.

[b] Sensitivity & Peak SPL data : these will depend on spectral distribution and crest factor of program material. Measured with band limited Pink Noise.

Nominal refers to Voice Decade (300 Hz - 3 kHz), Wideband to the specified ±3dB range. Data are for speaker + processor + recommended amplifier combinations. Peak SPL is at clipping of recommended amplifier.

[c] Directivity curves & data : obtained by computer treatment on off axis response curves.

E&OE September 2009.

## Architectural and Engineering Specifications

The 2-way full range loudspeaker system shall have one 8 inch shielded neodymium cone transducer and a 1 inch shielded neodymium compression driver on a low distortion constant directivity asymmetrical dispersion horn. The system's horizontal coverage shall range from 50° to 100°, with vertical coverage of +25° and -30°. The user shall be able to rotate the horn in 4 directions as required by the application. The system shall have a Q of 10 and a Directivity Index that is 10 at frequencies above 1.8kHz. Nominal Sensitivity shall be 96dB (94dB wideband). When driven by a NEXO NXAMP 4x1, NXAMP 4x4 a PS8 TDController or by a NX242 properly connected to amplification capable of delivering 200 to 500 Watts into an 8Ω (nominal) load the system shall be capable of 122dB to 125dB peak SPL, with a frequency response of 69Hz to 19kHz ±3dB (62Hz to 20Hz -6dB). The system shall include an internal passive crossover. Electrical connections shall be made via one of the two 4-pole NL4MP SPEAKON connectors.

The system shall have a tuned ported multi-angle enclosure constructed of 18ply Baltic birch, finished in textured black or white coating and having exterior dimensions no greater than 406mm H x 250mm W x 219mm D (16.0in H x 9.8in W x 8.6in D); the system shall weigh 7.5kg (16.5lbs). Exterior hardware shall include 3 mounting points (2 on the top, 1 on the bottom), 6 mounting points on the sides and 1-pole socket. Interior components shall be protected by a powder coated perforated steel grille. The system shall be the PS8 with a PS8 TDController, NXAMP 4x1, NXAMP 4x4 or NX242.

## LIMITED WARRANTY

NEXO loudspeakers and electronics are covered against defects in workmanship or materials for a period of two (2) years from the original date of purchase. At the option of NEXO the defective item will be repaired/replaced with no charge for materials/labour. The item is to be adequately packaged and dispatched, pre-paid, to a NEXO authorised distributor/service centre. Unauthorised repair shall void the warranty. The NEXO warranty does not cover cosmetics or finish and does not apply to any items which in NEXO's opinion have failed due to used abuse, accidents, modifications or any type of misuse. All images and text herein are the property of NEXO SA, and deemed accurate, although specifications are subject to change without notice.